

# VL-DT1

## D-Tap Advanced Battery Charger



### Instruction Manual

Thank you for purchasing the VL-DT1. The VL-DT1 is designed to charge Lithium Ion batteries equipped with D-Tap Advanced. Prior to using the charger, IDX recommends to read this Instruction Manual and keep this manual for future reference.

#### ⚠ WARNING

##### May cause sudden serious injury and death

- Do not connect to an AC power source that exceeds the voltage specification stated on the unit.
- Use only with the compatible batteries listed in this manual.
- Do not short the contact pins with any metal object.
- Do not carry or store with metal equipment.
- Do not immerse in water.
- Do not attempt to open the outer casing or break apart.
- Do not subject the unit to extreme physical impact or pressure, or place any object across the terminals that could cause it to short.
- Do not attempt to use if damaged.
- Protect the power cord from any damage.

#### ⚠ CAUTION

##### May cause injury or damage other equipment

- The unit should be used under the conditions listed in this manual.
- Do not expose the unit to extremely high temperatures.
- Use the approved power cord / appliance connector / plug conforming to the proper ratings (voltage, ampere) and safety regulations of each country if applicable.
- Keep the unit away from excessively dry or humid environments.
- Stop charging immediately if the charging does not complete within the designated time.
- In case of abnormal smell, leak, color change or case deformity during use, turn the power off and unplug the cable from the socket to avoid possible injury.
- Do not carry the charger while the battery is attached.
- Do not charge the battery while the battery is used with equipments.
- Do not charge the battery while the battery is charged from other charger.

#### Specifications

- Recommended batteries : IDX Lithium Ion batteries equipped with D-Tap Advanced
- Input voltage : AC100V-240V 50 / 60Hz Automatic
- Rated output : DC16.8V/2A
- Power consumption : MAX 90VA
- Charging method : Constant current / Constant voltage
- Operating temperature : 0 ~ 40°C / 32 ~ 104°F
- Operating humidity : 20% ~ 90% RH
- Safety Features : Temperature protection / Over-current protection / Short-circuit protection / Reverse polarity protection / Charge protection timer
- Indication : Status LED Indicator (RED / GREEN)
- Dimensions : Charger approx. 110 ( W ) × 33.5 ( H ) × 62 ( D ) mm  
4.3 ( W ) × 1.3 ( H ) × 2.44 ( D ) inches  
Charging cable length 0.8m / 31.5 inches
- Weight : Charger body approx. 230g / 0.5 lbs
- Charge time standard :  
For the latest charging time information, please visit our website (<http://idxtek.com/charge-chart>)

#### Features

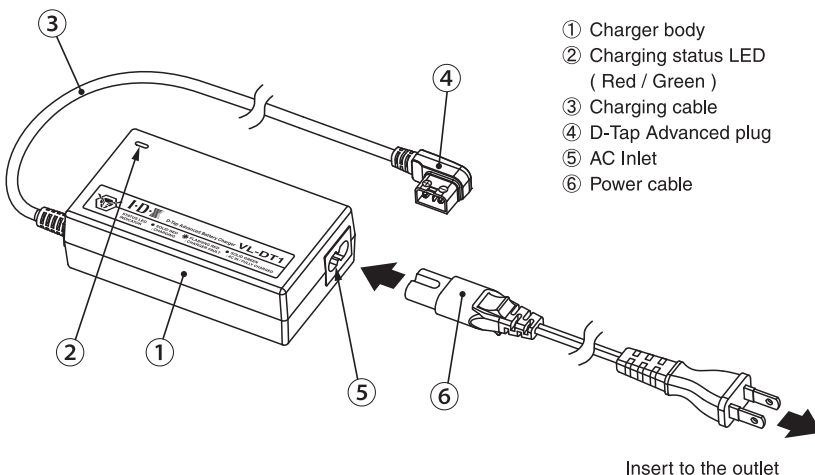
- IDX Lithium Ion batteries equipped with D-Tap Advanced can be charged.
- Auto safety & protection features
- \* D-Tap Advanced is a 3 pin connector that enables charging.

#### Status LED Indicator

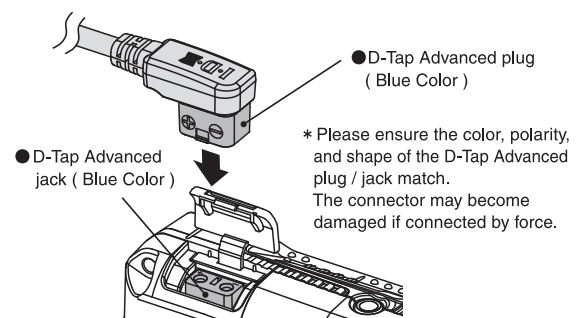
##### LED indicator states

LED	Indication	Status
Solid Red	●	Charge in progress
Flashing Red	⚡	Battery abnormal temperature/ Charger fault
Solid Green	●	AC is plugged in / Fully Charged
Light Off	○	No power

#### Operating Instructions / Location and Function of Parts



- 1 : Insert a plug into the battery equipped with D-Tap Advanced connector, and start charging.  
※ Please be sure to check the LED shows RED.  
It might be a battery fault/full charge if the LED continuously flashing Green.
- 2 : Charging will complete when the charger detects the battery is fully charged.  
※ The charger won't start charging if the charger detects abnormal.  
※ The charger won't start charging if the battery's temperature is extremely high/low.  
Please be sure to bring a battery back to normal temperature before charging it.



Manufacturer : **IDX Company, Ltd.** 6-28-11 Shukugawara, Tama-ku, Kawasaki-shi, Kanagawa-ken, 214-0021 Japan

Tel : +81-44-850-8801 Fax : +81-44-850-8838 E-mail : [idx.japan@idx.tv](mailto:idx.japan@idx.tv)

Importer for EU : **IDX Technology Europe, Ltd.** Unit 9, Langley Park, Waterside Drive, Langley, Berkshire SL3 6AD, England

Tel : +44-1753-547692 Fax : +44-1753-546660 E-mail : [idx.europe@idx.tv](mailto:idx.europe@idx.tv)

Importer for USA : **IDX System Technology, Inc.** 19001 Harbortgate Way, Suite 105, Torrance, CA 90501 USA

Tel : +1-310-328-2850 Fax : +1-310-328-8202 E-mail : [idx.usa@idx.tv](mailto:idx.usa@idx.tv)

C1MK160295-1  
201611

\* Design and specifications are subject to change without notice.

